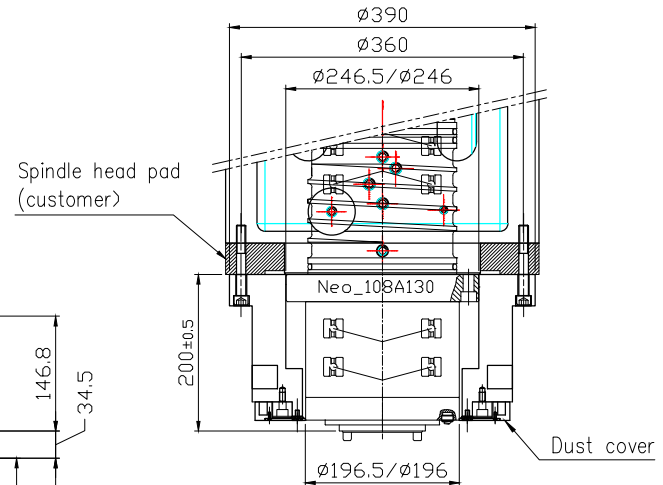
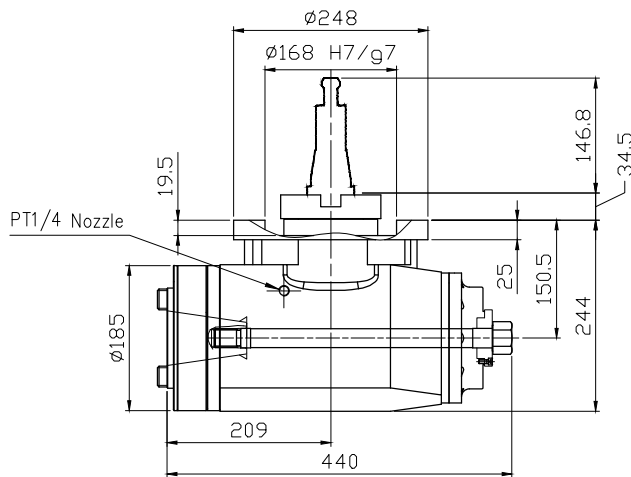
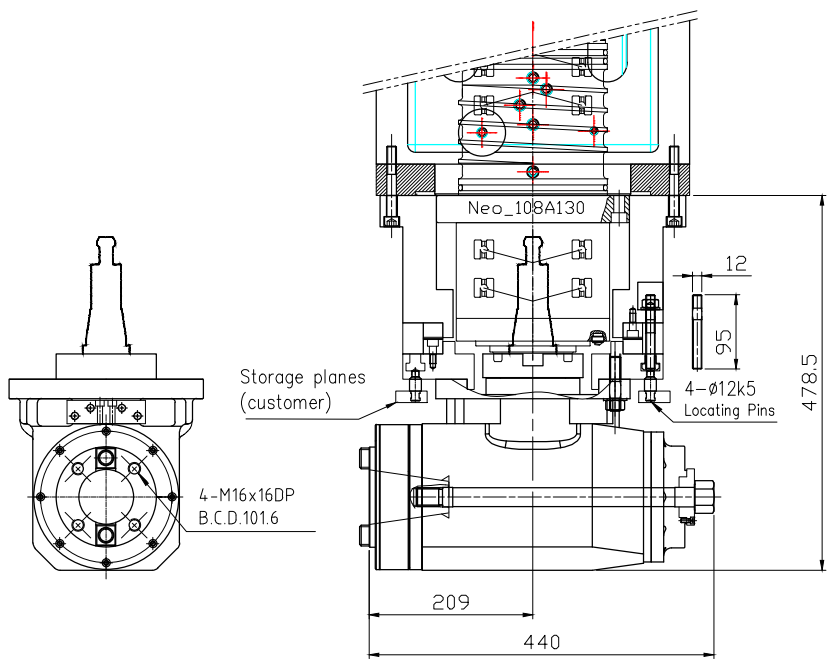


90 DEGREE ANGLE HEAD SPEC.	
Tool interface	BT50
Spindle speed	3,500 rpm
Clamping force	1200~1500 kgf
Bearing	ø90-4 pc
Bearing	ø70-2 pc
Lubrication	Grease
Volume(LxWxH)	44x390x478.5mm
Weight	220 kg



Equipped and specifications			
Spindle type	108A130		
Head transposition way /Rpm/Torque(min)	Manually		
Head Dividing component/ Minimum division angle	Clutch/5°		
Head Dividing component Un/clamp mode	Manually		
Tool unclamp mode	Manually		
Head Storage methods	Customer supplied		
Proximity Switch	Others (Accessories)		
C-axis Un/clamp NO	Dust cover YES	Taper pin(ø12) NO	Dust cover YES
C-axis Home NO	Head NC YES	End key NO	End key YES
		NO correction plate	

PERMISSIBLE MACHING BASIC DIMENSION DEVIATIONS						DRAWN		
>0	>6	>30	>120	>400	>1000	DESIGNED		
±0.05	±0.10	±0.15	±0.20	±0.30	±0.50	CHECKED		
PERMISSIBLE DRILLING BASIC DIMENSION DEVIATIONS					+0.25 -0.05	MATERIAL		
PERMISSIBLE ANGLE BASIC DIMENSION DEVIATIONS					±0.5°	SCALE	1:4	

setco
Precision Solutions

NAME _____

DWG.NO. M55M01-MCT-D

ver.coordinates Changing content Modified by date