

A

B

C

D

E

F

1

2

3

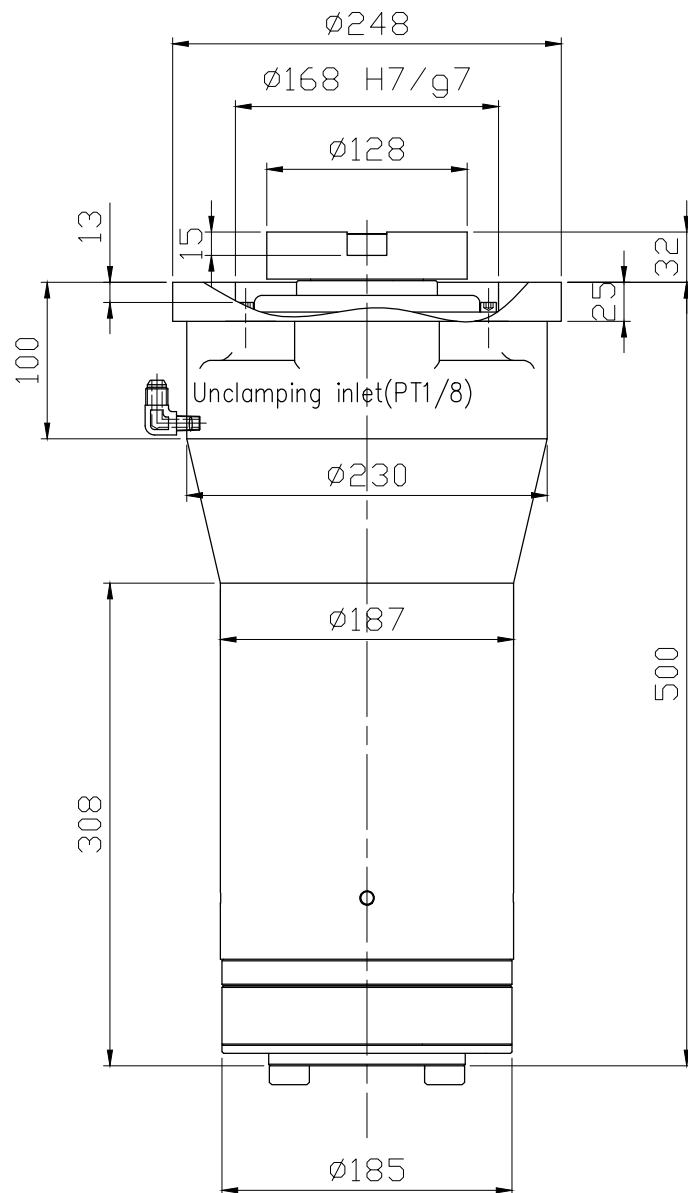
4

5

6

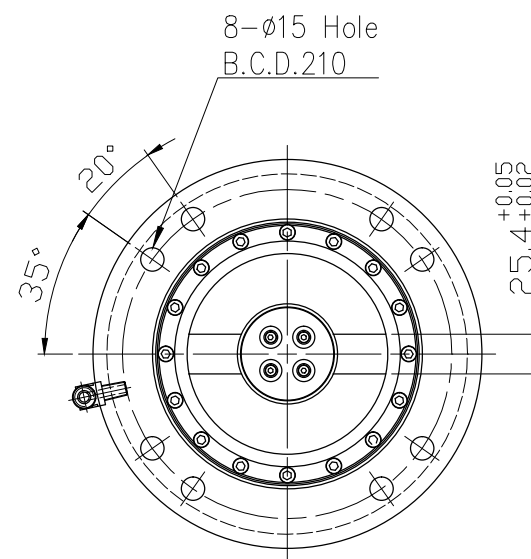
7

8



## ANGLE EXTEND HEAD SPEC.

Tool interface	#50 7/24Taper
Spindle speed	3,500 rpm
Clamping force	1,200~1,500 kgf
Max. Torque	660 Nm(10min)
Oil pressure	50 kg/cm <sup>2</sup>
Volume(LxWxH)	545x250x250 mm
Weight	130 kg



Top View

## PERMISSIBLE MACHING BASIC DIMENSION DEVIATIONS

>0	>6	>30	>120	>400	>1000
$\pm 0.05$	$\pm 0.10$	$\pm 0.15$	$\pm 0.20$	$\pm 0.30$	$\pm 0.50$

## PERMISSIBLE DRILLING BASIC DIMENSION DEVIATIONS

$+0.25$	$-0.05$
$\pm 0.5^\circ$	

## PERMISSIBLE ANGLE BASIC DIMENSION DEVIATIONS

DRAWN

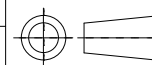
DESIGNED

CHECKED

MATERIAL

SCALE

1:5



NAME

DWG.NO.

X62M01