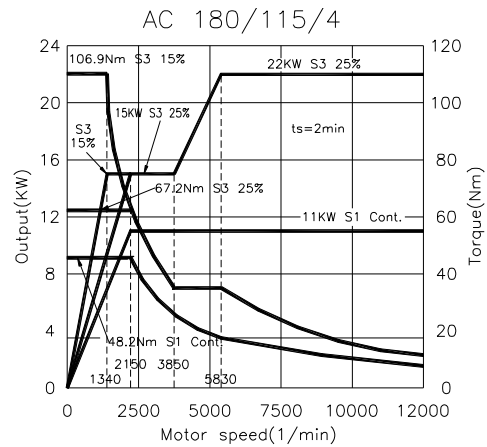
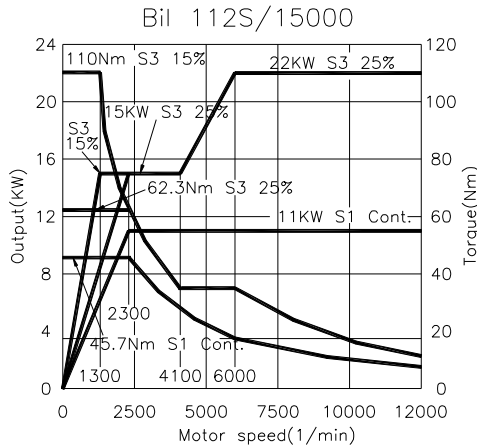
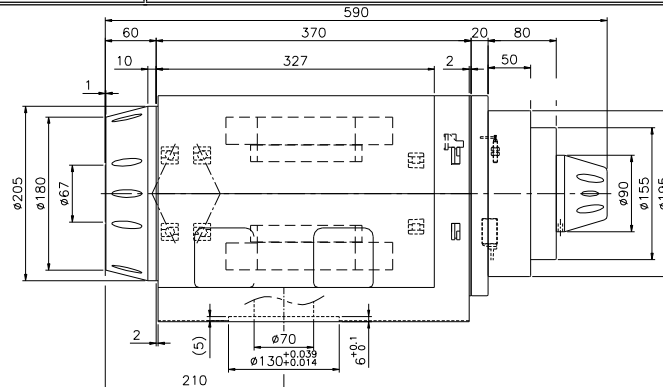


Motorized Spindle modle / Turning & Milling

■ 251A



Tool interface	HSK T63
Spindle Max. Speed	12,000rpm
Motor Power	FANUC : 11 kW / 15kW / 22kW ATE : 11kW / 15 kW / 22 kW
Motor Torque	FANUC : 45.7 Nm / 62.3 Nm / 110 Nm ATE : 48.2 Nm / 67.2 Nm / 106.9 Nm
Bearing I.D.	Ø70 mm
Bearing lubrication	Grease
Pull-in force	2400±100 kgf
Release pressure	Hydraulic - 50~60 bar
Cooling system	Oil
Rotary union	C.T.S. Ready / 100bar(MAX)
Encoder	FANUC : A860-2150-T401 / (α iBZ sensor 256 (256 λ /rotation)) ATE : VS RGM2G-A-V3Z / (sin/cos 1Vpp / 360 pulse/rev)
Weight	



Edition 2016/01/28