



RSUR – Radial Series Rotating Union for Fluid

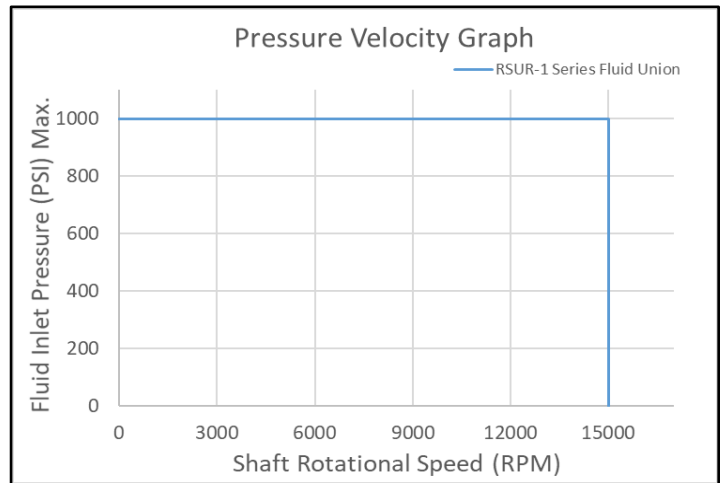
- Adapted AirShield™ technology for superior bearing protection over labyrinth seal designs
- Adapted AirShield™ technology also provides longer protection of surrounding equipment against leakage from union
- High durability steel parts
- Controlled bypass leakage for cooler operating temperature and longer life
- Primary seal designed for long life
- Robust ABEC Class 7 bearing design for long life

Operating Information

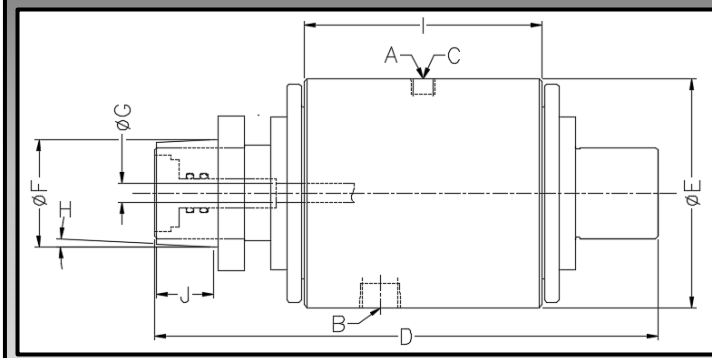
Fluid (Thru to Spindle)*	Water-glycol Coolant, Oil-Based Coolant, Air
Fluid Filtration	25 µm (99.9% efficient)
Max. Shaft Speed**	15,000 RPM
Torque Rating	200 N-m
Max. Fluid Pressure	1,000 PSI (69 Bar)
Temperature Range	40 - 145 °F (4 - 60 °C)
Air Seal Filtration	5 µm (99.99% efficient) AIRSHIELD™
Air Seal Pressure	10 - 15 PSI (0.7-1.0 Bar)

*Contact Setco for water capable option

**Do not spin housing



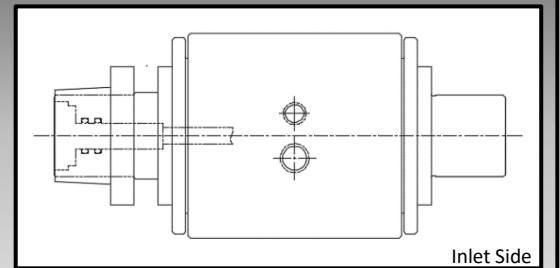
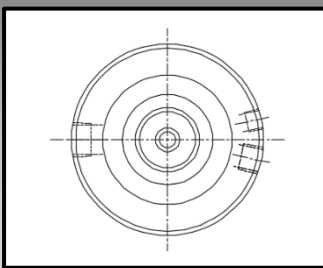
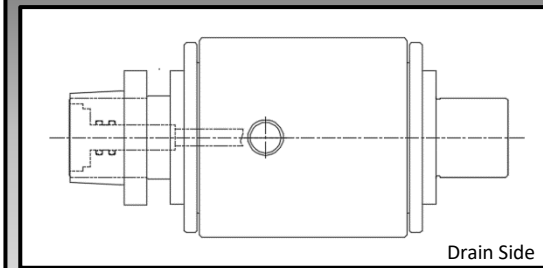
RSUR-40A SERIES SPECIFICATIONS



Ordering Number	RSUR-40A
A – Fluid Inlet	1/4" NPT
B – Fluid Drains	3/8" NPT
C – Air Supply Inlet	1/8" NPT
D – Overall Length	210.7 mm
Ø E – Overall Diameter	95.6 mm
Ø F – Taper Diameter	45.000 mm
Ø G – Flow Diameter	8.0 mm
H – Taper Angle	3° Per Side
I – Body Length	99.8 mm
J – Taper Length	24 mm

MOUNTING INTERFACE AND PORTING VIEWS

Contact Setco for porting, inlet and other design options.



Patent Pending

For patent info, see:

<https://www.setco.com/patents>



For more information, contact Setco at

+1 (513) 940-5110 or visit

www.setco.com

General Warnings: 1. No side load to be put on the union 2. Do not subject union to thermal shock 3. Isolate the coolant union from excess vibrations

† Dry Running can be within the functionality of the device, however, running 50 PSI (3.5 bar) of coolant pressure at the inlet is preferred for operations that do not have coolant through the tool. Contact Setco for dry running capability.