

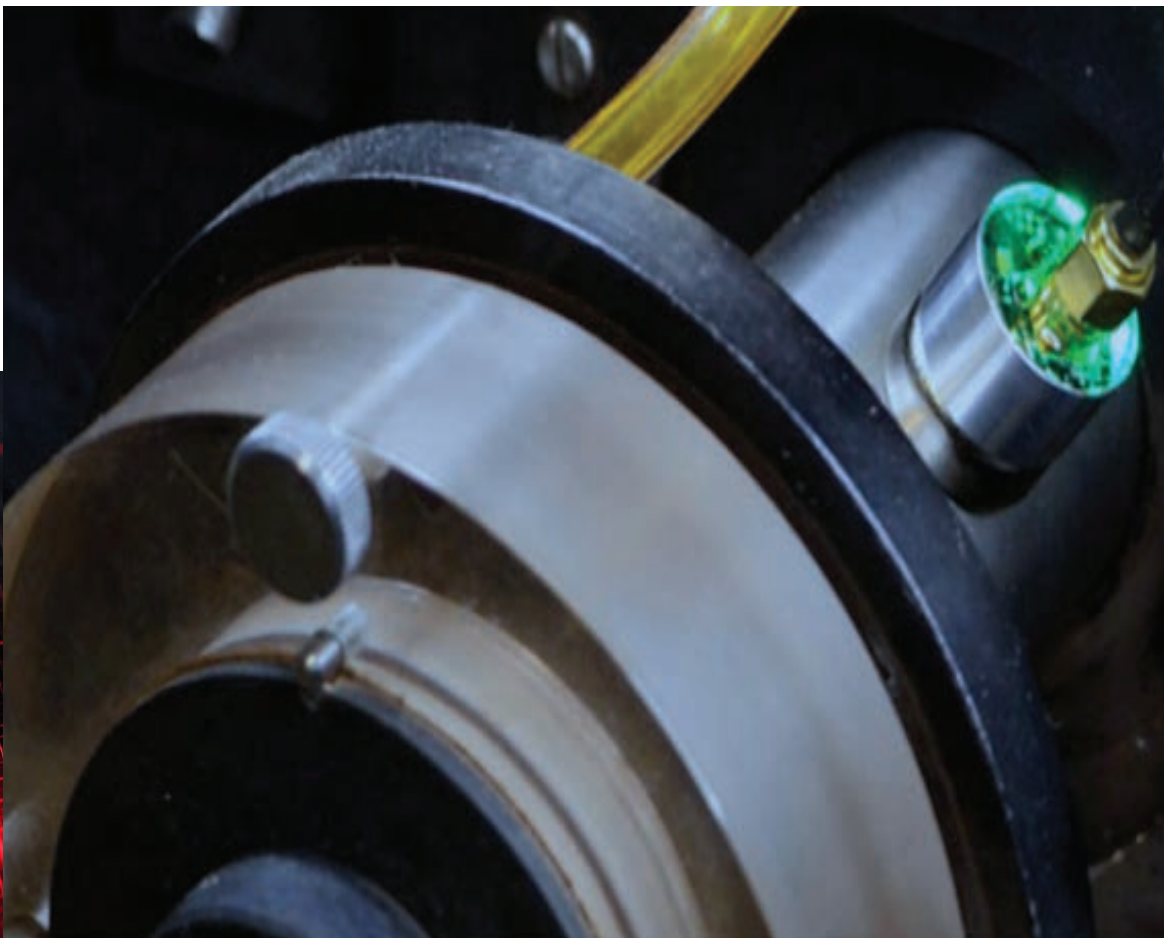


**Predictive
Technology**

A **setco** Company

Triggered Vibration & Temperature Monitoring Real-time Protection

*Protect Your CNC Spindles from
Running Unbalanced Tools, Aggressive Cuts & Crashes*



VibeProTect - A complete 3 axis and Omnidirectional vibration sensor that monitors your critical assets and alerts you in real-time:

- » Full Vibration analysis in multiple axis's
- » Temperature analysis
- » Bearing health condition
- » Trending and Reporting
- » Compatible with VibePro 24/7 Web based software system
- » Power on measurement trigger
- » Selectable number of measurements and frequency
- » Email or text alerts to technicians



Technical Specifications:

Omnidirectional vibration surface wave

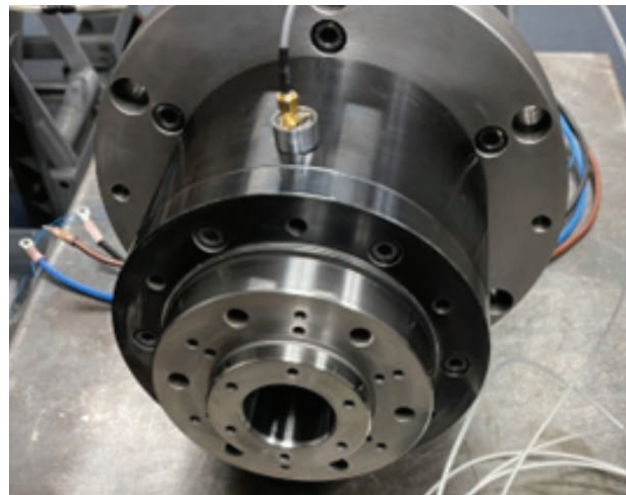
- » Sampling rate: 41.667ksps
- » Sensitivity: Application dependent resolution down to micro-gees
- » Bandwidth: 100Hz-20kHz
- » Resolution: 24-Bit

Tri-axis servo accelerometer sensor

- » Sampling Rate: 3200sps - 25600sps
- » Sensitivity: 1 milligee (configurable)
- » Bandwidth: 0- 6000Hz +/- 3 dB, 0-12000Hz +/- 5 dB

General Specifications:

- » Dual-Mode: Combination of Omnidirectional or Tri-axis sensor
- » Sensor Power: Digital coax cable with one connection for both power and data
- » Wireless Data output to VibePro 24/7 base station





Call: 603|203|6439

35 Zachary Rd, Manchester, NH 03109, United States

www.gtipredictive.com

The contents of this publication are the copyright of the publisher and may not be reproduced (even extracts) unless prior written permission is granted. Every care has been taken to ensure the accuracy of the information contained in this publication but no liability can be accepted for any loss or damage whether direct, indirect or consequential arising out of the use of the information contained herein.



**Predictive
Technology**

A **setco** Company

